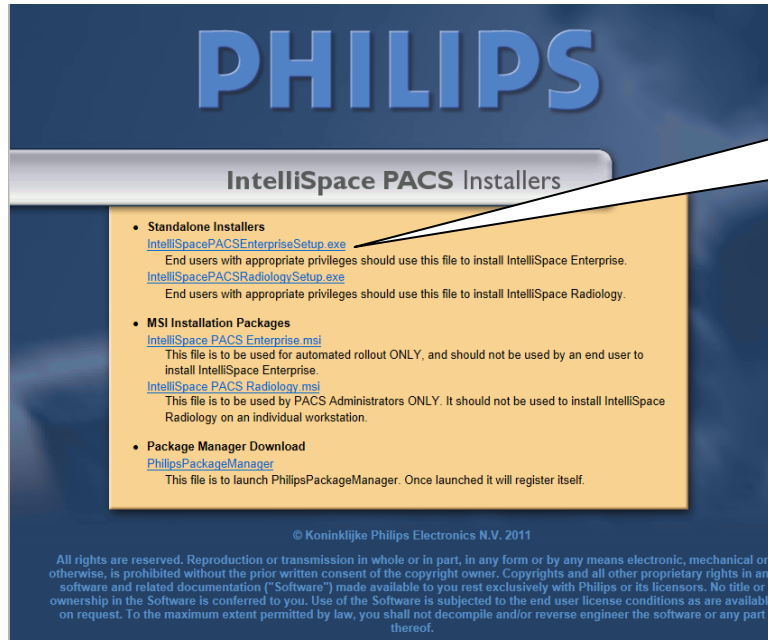


GMI images and reports on your PC...

Installing IntelliSpace PACS client on your computer

In Internet Explorer, enter the URL **viewer.gmi.net.au/installers** to bring up the following site:



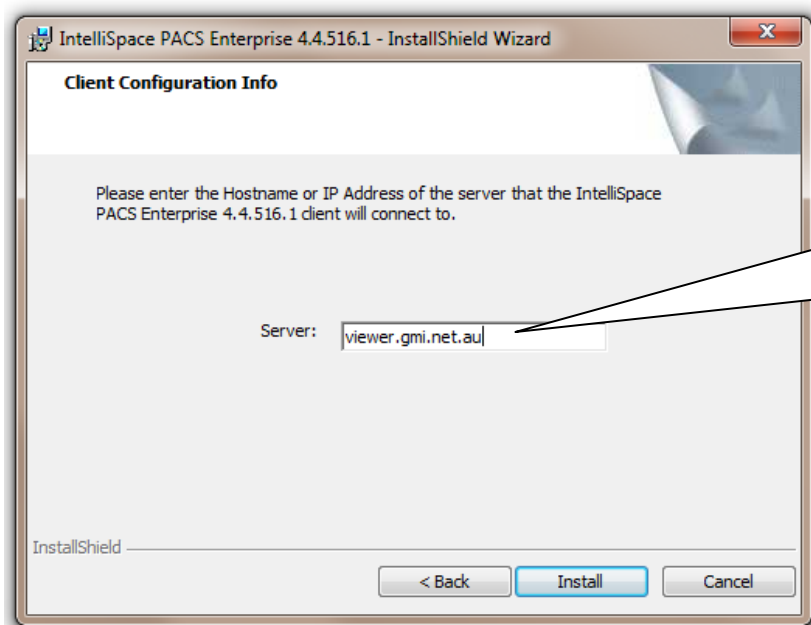
Click the top link:

[IntelliSpacePACSEntriseSetup.exe](#)
and choose **Run** to download the installer.

Tip...

For installing on multiple computers:
Choose **Save** instead of **Run** and save to a stick which can be taken from machine to machine – this should reduce installation time to a couple of minutes per computer!

You will be asked to confirm English as the language before the installer opens. Choose **Next** on the first 2 screens.



Type **viewer.gmi.net.au** in the server box and click **Install**. It takes a few moments to complete the installation, then click **Finish**.

You will now have a reen icon on your desktop. Rename this to **GMI** and you're ready to go.
(Uninstall Philips iSite Enterprise if you previously had GMI images on your computer.)

Logging in:

Use your username as your password on first access, at which time you will be prompted to reset it.